

SAILING CRUISES



SEA CLOUD SPIRIT

Ship and Cruise Information



SEA CLOUD
C R U I S E S



Dear Guest,

Thank you for choosing to travel with the SEA CLOUD SPIRIT.

With this brochure we would like to get you into the mood for your cruise and give you important information in advance. This will help you familiarize yourself with the SEA CLOUD SPIRIT and to quickly navigate on board.

On board a traditionally sailed windjammer, the journey itself is the destination. Enjoy the private flair and classic maritime style of our full-rigged three-master, the delicious cuisine and the unobtrusive and caring service of our crew. Unforgettable moments await you.

Please note that depending on the current situation, individual on-board services during your trip may have to be adapted to the requirements and regulations of our valid safety and hygiene concept.

The SEA CLOUD CRUISES Team wishes you happy days on board!



Table of Contents

Ship's Data	6
Deck Plan & Cabin Categories	7
Communication	8
General Information	9
On-board Information	11
Sail Diagram	20
Nautical Terms	22

Status as of August 2022

Contents subject to change without notice

Ship's Data

Technical Data

- Length overall: 138 m/452.7 ft
- Beam: 17.20 m/56.4 ft
- Draft: 5.65 m/18.5 ft
- Height of main mast above waterline: 57.90 m/190 ft
- Total sail area: approx. 4,100 m²/44,100 sq ft
- Number of sails: 28
- Passengers: max. 136
- Crew: approx. 85
- Drive: 28 sails and 2 dieselelectric drives (2 x 1,700 kW)
- Flag: Malta
- Year of construction: 2021

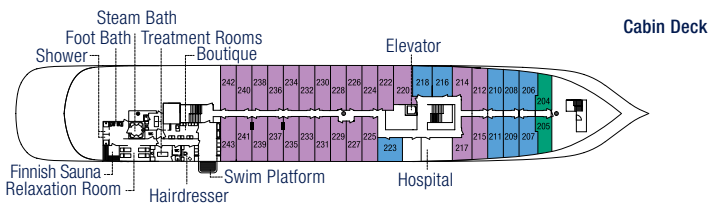
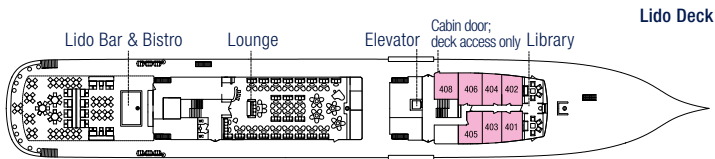
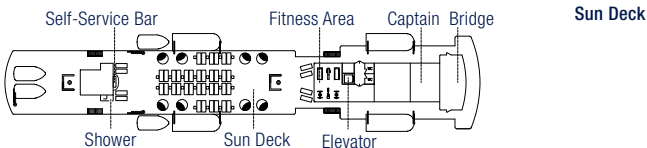
Public Areas

- Restaurant (180° panoramic view) with free seating and one sitting
- Lido bar and bistro
- Lounge with Steinway grand piano
- Library with comfortable sitting area
- Wellness and spa area with two treatment rooms, Finnish sauna, steam bath, relaxation room, multi-sensory shower, various massages, beauty parlour and hairdressing salon
- Fitness area with ocean view and the latest cardio equipment
- Boutique, reception desk, hospital
- Sun deck with sunloungers, circular sunbeds and shower
- Swim platform, watersports equipment
- 4 zodiacs
- Elevator for all decks
- WI-FI in cabins and public areas

Cabin Furnishing

- 69 outside cabins (of these, 22 junior suites and 3 suites have balconies; and 7 de luxe lido cabins (Cat. C) have panoramic windows resp. a panoramic door (408) that can be opened)
- Interior: bathrobes, hair dryer, exclusive cosmetics, telephone, adjustable A/C, private safe, minibar, coffee machine, TV with entertainment system, dressing table with USB charging port, bureau

Deck Plan



■ Cabins 235/237 and 239/241 with connecting doors ● Masts

Cabin Categories

- Cat. A ■ Suites with balcony
- Cat. B ■ Junior suites with balcony
- Cat. C ■ De luxe lido cabins, outside
- Cat. D ■ De luxe cabins, outside
- Cat. E ■ Superior cabins, outside
- Cat. F ■ Superior single cabins, outside

Take our virtual tour:
www.seacloud.com/en/seacloudspirit

Communication

Telephone

The SEA CLOUD SPIRIT is fitted with a satellite communication system. You will find the telephone numbers via which the ship can be reached in your travel documents and on board.

Charges for connecting via the cellular network are approx. € 3,00 per minute. Satellite communication costs are approx. € 1,00 per minute.

Internet/Computer

On board, a laptop that is located in the library can be used free of charge. You can use this laptop or your own laptop to connect to the internet using the access code (WI-FI), however please note that there is a charge for this. With your own laptop you can also use the WI-FI connection available in the public areas and in your cabin. The access code can be obtained at the reception desk. Continuous reception cannot be guaranteed; in certain sailing areas or due to the set course, interruptions to network coverage might be experienced. The WI-FI connection on a ship is not comparable to the usual connections on land.

Emails

The SEA CLOUD SPIRIT has its own on-board email address, which is passenger@scs.seacloud.com. If you give anyone this email address, you should advise them to send text-only messages without attachments. Please ensure that your name and cabin number appear in the subject line so that the reception desk can forward any correspondence on to you. As soon as a message is received, you will be informed and receive a printout of the email.

General Information

Embarkation and Disembarkation

In general, embarkation begins at 4.00 pm and disembarkation takes place at 9.00 am. Any deviation from these times will be indicated in your cruise documents. Please note that an earlier embarkation resp. a later disembarkation is not possible as the crew needs the time to prepare the ship for the next cruise.

Luggage

Please label your luggage with the luggage tags enclosed with your travel documents. Please ensure that your name and cabin number are clearly visible. If you have booked a guaranteed cabin, leave the cabin number field blank.

Shore Excursions

You will receive information on shore excursions with your travel documents prior to departure. We always try to organize English and/or German speaking local guides – depending on the group. You can also get more detailed descriptions of shore excursions from the Cruise Director on board. Reservations and payments are made on board. Please remember to bring sturdy footwear, a light jacket/windbreaker as well as sunscreen where appropriate.

Travel Documents

Your travel documents contain information on your ship's course, shore excursions and, where applicable, your flight ticket. Please have your passport to hand during embarkation. Your passport must be valid for a minimum of six months after the end of the journey.

Travel Insurance

For your own security, we recommend taking out cancellation, luggage, accident, health and holiday curtailment insurance.

Currency

The on-board currency is the Euro (€). To make on-board billing easier, we have taken the liberty of setting up an on-board account for you for the duration of your cruise. Your personal expenses on board will be charged to this account. For final settlement we accept the following payment methods:

American Express

VISA Card

MasterCard

Diners Card

German EC Cards / Debit Cards

Cash (US\$ and Euro)



On-board Information

Air Conditioning

The ship is fully air-conditioned. Cabin temperatures are adjustable.

Bars

The lido bar and the lounge bar are open daily from 11:00 am. Soft drinks, coffee, tea, water and juices are available all day free of charge.

Boutique

The boutique offers accessoires, clothes and gifts. The boutique's opening times vary depending on the ship's lay time. You will find the exact opening hours in the daily program and on the displays. Outside of opening hours, you can also contact the reception desk with any questions or requests. The current selection can also be found on the internet at www.seacloudseason.de/en. Please note that by following this link you will be leaving the website of the SEA CLOUD CRUISES GmbH.

Bridge

The bridge area can be visited during the day and/or at specified times subject to the Captain's approval. The bridge is closed during maneuvering (AE) and night cruising.

Cabin Furnishings

Your cabin is equipped with a TV with entertainment system and video on demand, a direct-dial telephone, a radio with on-board program and an electronic safe. In addition, each cabin has a selection of non-alcoholic drinks as well as a coffee machine with a selection of coffees and teas; all of this is available free of charge. A selection of quality toiletries is provided for you in the bathroom. You will also find a bathrobe, slippers and a powerful hairdryer in your cabin. In the cabins that feature a balcony, a table and two chairs are provided for you outside.

Cabin Key Card

You will receive your cabin key card at the start of your cruise. It is used to unlock your cabin and as identification when boarding and leaving the ship. Please keep this card with you at all times and inform the receptionist immediately if you lose it.

Change of Itinerary

The focus of our cruises is on the sailing experience. Even with the most meticulous route planning, changes to the itinerary may be necessary due to weather conditions or other unforeseeable circumstances. If there are any changes, you will be informed by the Captain on board.

Crew Area

Please respect the privacy of the crew. Passengers are not permitted to enter the crew's quarters.

Daily Program

General information on the next day's events and shore excursions is prepared by the Cruise Director in the daily program, which is placed in your cabin every evening.

Dietary Requirements, Allergies and Intolerances

Please inform us well in advance of the cruise if you have any allergies or intolerances, or any other special dietary requirements. This information is very important for the kitchen, laundry and room service. We will gladly accommodate your requests.

Dress Code

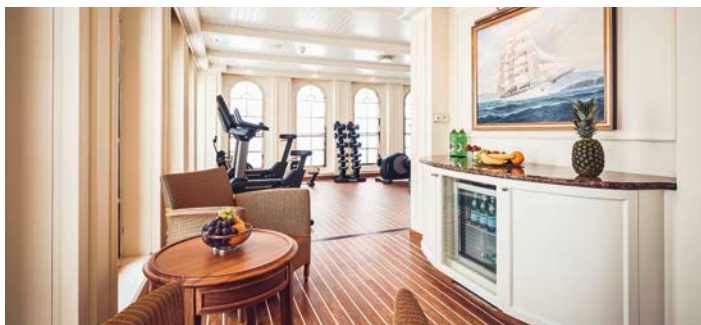
During the day, you won't go wrong with smart leisurewear or a summery, casual-chic style. For the evening, we recommend a smart-casual outfit. Please refrain from wearing swimwear during lunch and/or shorts at dinner. The Captain's Dinner (an event which normally takes place twice on each trip – once on short cruises) is a time when our guests tend to opt for a more elegant look. We recommend a suit or ensemble for the gentleman and appropriate dress/outfit for the lady. Also non-slip footwear, which provides grip on the spacious teak decks, should be part of your luggage.

Elevator

The SEA CLOUD SPIRIT is equipped with an elevator that conveniently connects all four passenger decks from the cabin deck to the sun deck.

Fitness

Our fitness studio is located on the sun deck. It is open to you all day and equipped with modern cardio machines and weights.



Foreign Currency

We only carry US\$ and Euro on board. Currency exchange from Euro to US\$ and vice versa is available from the reception desk at any time. Other currencies must be exchanged in the destination countries or at home before your cruise.

Hospital/Medical Advice

The hospital is located on the cabin deck and is staffed by the ship's doctor. Medical consultation hours can be found in the daily program. In case of emergency, the doctor can be reached at any time by calling 911. Various medications as well as tablets against seasickness are available in limited quantities.

In addition to various stairways, the SEA CLOUD SPIRIT is equipped with an elevator. Access onto the ship as well as leaving it is via the on-board gangway, which is not always level. Depending on the tide, access might be steep. Unshipping with the on-board tenders or zodiacs is also via the gangway. Before embarking on one of our voyages, you should be sure that you are in good physical condition. If you are unsure whether you will be able to manage the conditions on board, please contact us. Specific medical treatments must be agreed upon in advance.

Languages on Board

The languages used on board are German and English. Daily programs, menus, announcements and shore excursions are provided in both languages.

Laundry

Laundry services available on board are limited to washing and ironing. There is no dry-cleaning available. You will find a price list in your closet. If you have booked a category A or B cabin, the laundry service is included in the cruise price. For safety reasons, passengers are not permitted to iron in their cabins.



Library

Choose from our selection of books in English and German and board games.



Lost Property

If you lose anything, please let the receptionist know.

Lounge

The lounge is located on the lido deck and is always open. Here you can listen to lectures and – on selected cruises – to concerts on the Steinway grand piano.

Lounge Chairs

On the sun deck, sun loungers and sunbeds are available in sufficient numbers. Please note that, out of consideration for your fellow passengers, reserving sunbeds and chairs is not permitted.

Mail

You may leave any mail at the reception desk, and it will be forwarded at the next port. Please write your cabin number in the place marker for the stamp. The postage will be charged to your shipboard account.

Meals

A small breakfast is offered to early and late risers. The grand breakfast buffet is provided in the restaurant. Lunch is served as a buffet on the lido deck or in the restaurant. In the afternoon, coffee and tea are served accompanied by some sweet treats. Dinner is a four-course menu with choices available as well as a vegetarian option. For the gala dinner, our executive chef will prepare an exclusive five-course menu. The bistro on the lido deck offers a flexible and casual alternative to dinner in the restaurant. A late-night snack nicely rounds off evening's culinary delights.

Newspapers

Via satellite, you will receive a daily newspaper with the latest news.

On-board Account

All personal expenditure on board such as drinks at the bar, laundry, telephone calls, items from the boutique, shore excursions etc. will be charged to your personal on-board account, which will be settled at the end of the cruise.

On-board Program

On a real windjammer, sailing and sailing maneuvers are of course the main focus. You can also actively participate in setting the sails, e.g. when fetching the gordings to furl the sails, when shooting the ropes to clear the deck, or when hauling through the lines to brace the yards. On selected voyages, experts on special subjects are on board. Artists, e.g. young talents from the Steinway Prizewinner Concerts Network, also complement the on-board program on individual voyages. In the lido bar, a pianist plays during the evening cocktail hour or for an after-dinner drink.

The up-to-date entertainment offers can be found in the daily program.

Pets

Animals are not permitted on board.

Postcards

The ship postcards available in your cabin and at the reception desk are free of charge.

Reception

The reception desk is located in the foyer of the verandah deck and is staffed from 7.00 am to 11.00 pm. You can contact the receptionist at any time. You can also put your name down on the list at the reception for a wake-up call.

Restaurant/Bistro

Meals are served on our ships in one sitting with free seating. Service times can be found in the daily program on board. Please kindly note that reservations are not possible. As an alternative to fine dining in the restaurant, you can enjoy your dinner casually and flexibly in the bistro on the lido deck – choose from our bistro menu.

Safe

In the closet of your cabin is an electronic safe which can be programmed with a personal code. Should you require any assistance, please contact the receptionist.

Safety

Safety equipment is explained during the emergency drill at the start of the trip. All passengers are required to participate in accordance with international regulations. All cabins and common areas are equipped with an emergency helpline (please dial 911). Life vests are stowed under your bed.

Smoking

Smoking is permitted only on the lido deck outside of meal times. We kindly request that smokers take the comfort of other passengers into consideration. Smoking is prohibited on the sun deck, the covered areas of the lido deck and on the cabin balconies at all times.

Swimming off the Ship

Our swim platform is the ideal launching pad for various water sports. The Captain will decide whether the platform can be used, weather permitting and subject to regulatory approval. Access to the swim platform is from the wellness and spa area on the cabin deck.

Tender Service

It is not always possible to moor the ship directly in the port at a pier. In such cases we offer a tender service, using our boats to get you to shore. Access is via the gangway. Please check the notice for the departure times of the tender boats. Please follow the instructions of our crew.

Tipping

All tips are included in the price of the trip.

Towels and Blankets

Blankets and towels are provided on the lido deck, on the sun deck and near the gangway.

Umbrellas

Umbrellas are available in the cabins.

Visitors

Visitors are permitted on board only if passengers or tour operators have notified the purser in advance. Notice must be given at least 72 hours in advance. Any services used by visitors while on board shall be settled via the passenger's or tour operator's on-board account. Visits are generally not possible on embarkation and disembarkation days.

Voltage

The voltage on board is 220 volts. All bathrooms are equipped with a shaver socket.

Water Sports

The SEA CLOUD SPIRIT has snorkeling equipment in sufficient numbers and various sizes, which may be used free of charge with permission of the Captain and weather permitting. We also offer stand-up paddle boards for beach landings, as well as a towable tube from the gangway.

Wellness and Spa Area

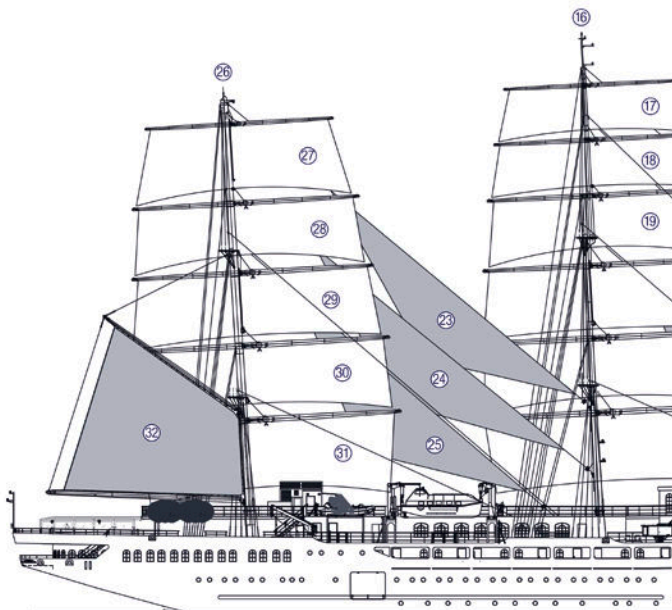
On the cabin deck you will find the wellness and spa area with two treatment rooms, Finnish sauna, steam bath, relaxation room and multi-sensory shower. For your personal well-being, massages and cosmetics are offered at an additional charge. An overview of the available treatments can be found in the spa brochure, which is provided in your cabin. Please book your appointments at the reception desk.

Wines

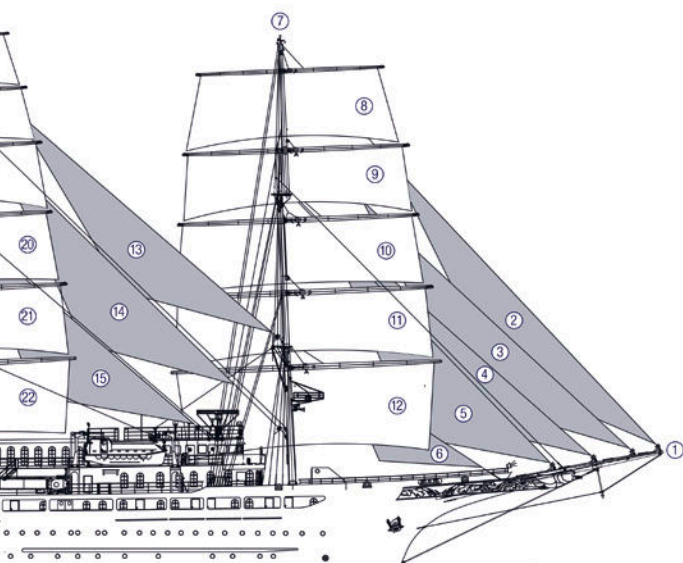
Our top-quality wines from well-known winegrowers are sourced from the best vineyards and the finest cellars – if possible even from the cruising destination. Our sommelier compiles a new wine selection for every season. The wines are thoughtfully chosen to complement lunch and dinner and are already included in the cruise rate. It is of course also possible to select a different premium wine from the wine menu at an additional charge.

Sail Diagram

- | | | | |
|---|----------------------------|----|----------------------------|
| 1 | Bowsprit | 9 | Fore Lower Topgallant Sail |
| 2 | Flying Jib | 10 | Fore Upper Topsail |
| 3 | Fore Topgallant Staysail | 11 | Fore Lower Topsail |
| 4 | Outer Jib | 12 | Fore Course Sail |
| 5 | Inner Jib | 13 | Main Royal Staysail |
| 6 | Fore Staysail | 14 | Main Topgallant Staysail |
| 7 | Fore Mast | 15 | Main Topmast Staysail |
| 8 | Fore Upper Topgallant Sail | 16 | Main Mast |



- | | | | |
|----|----------------------------|----|------------------------------|
| 17 | Main Royal | 25 | Mizzen Topmast Staysail |
| 18 | Main Upper Topgallant Sail | 26 | Mizzen Mast |
| 19 | Main Lower Topgallant Sail | 27 | Mizzen Upper Topgallant Sail |
| 20 | Main Upper Topsail | 28 | Mizzen Lower Topgallant Sail |
| 21 | Main Lower Topsail | 29 | Mizzen Upper Topsail |
| 22 | Main Course Sail | 30 | Mizzen Lower Topsail |
| 23 | Mizzen Royal Staysail | 31 | Mizzen Course Sail |
| 24 | Mizzen Topgallant Staysail | 32 | Gaff Sail |

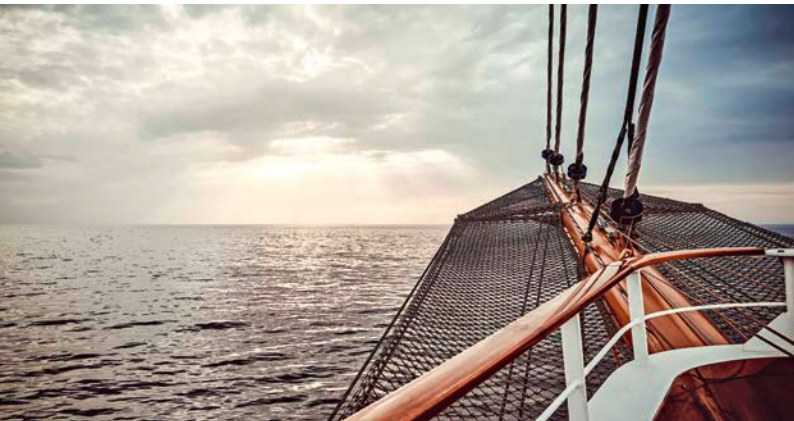


Nautical Terms

Aft	The rear of the vessel.
Amidship	The middle of the ship, roughly halfway between the bow and stern.
Berth	The term for a bed, sleeping area or where a vessel is moored at a quay.
Below	The lower deck.
Bridge	The ship's command center, located forward on the uppermost deck.
Bulkhead	Any of the partition walls used to separate various areas (rooms) of the ship.
Bulwark	The retaining structure at the outer edge of the open deck.
Bunkering	To take fuel aboard.
Caprail	The wooden rail which caps the bulwarks.
Course	The geographical direction the ship is sailing (0 - 360°). Also the lower sail on the foremast.
Disembark	To leave a ship after the end of a voyage.
Deck	Floor
Dock	The area beside a pier, wharf or quay and around the vessel. A vessel berths in a dock, or docks, goes into a dock such as a "dry dock". Often confused with pier, wharf or quay, which are stationary.
Embark	To go aboard a ship to begin a voyage.
Forward	The front area of the ship.
Galley	Ship's kitchen.
Gangway	The entrance through which you can pass when boarding a vessel.
Gross	A figure describing the total volume tonnage of the ship including engine spaces, crew spaces and passengers spaces.
Knot	A ship's speed is measured in knots: 1 knot = 1 nautical mile per hour = 1.852 km per hour. From an old method of measuring speed by counting knots in a line running off a reel astern of a vessel over a period of 14 seconds.

Leeward	Refers to the side of the ship away from the wind. A lee is a shelter or protection. The leeward side of a vessel is the lee side.
Log	The ship's diary so to speak and an official legal document.
Nautical mile	1 nautical mile = 1.852 km/1,151 miles 60 nautical miles = 1 degree of latitude
Navigation	Steering of the ship, planning of ship's course and noting the geographic position.
Portside	The left side of the ship with the red lamp when facing forwards.
Porthole	Round windows in the ship's side.
Starboard	The right side of the ship with the green lamp when facing forwards.
Stern	The "rear" or "aft" end of a ship.
Tender	Ship's motorboats used to transport people ashore and back.
Windward	Refers to the side of the ship from which the wind is coming.
Zodiacs	Rubber boats used to transport people ashore and back.





Welcome aboard.